

JET

JDP-17

DRILL PRESS

716300M.... 230/50/1

716300T.... 400/50/3

PARTS LIST

JPW (Tool) AG.

Tämperlistrasse 5
CH-8117 Fällanden
Switzerland

Phone +41 44 806 47 48

Fax +41 44 806 47 58

www.jettools.com



Parts and Assembly for 716300M

Parts List

| Index No | Part No | Description | Size | Qty |
|----------|--------------|---|-----------------------------|-----|
| 1 | JDP17-001R | Anchor Plate | | 1 |
| 2 | JDP17-002E | Plate | | 1 |
| 3 | JDP17-102 | Indicator Light | | 1 |
| 4 | JDP17-004R | Front Housing | | 1 |
| 5 | JDP17-108 | Plate | | 1 |
| 6 | 131803108 | Pan Head Tapping Screw | M3 x 8 | 2 |
| 7 | TS-2284302 | Pan Head Machine Screw | M4 x 30 | 2 |
| 8 | JDP17-008E | Cable Protective Sleeve | | 1 |
| 9 | JDP17-101E | LED Circuit Board | | 1 |
| 10 | JDP17-107 | MCU Circuit Board | | 1 |
| 11 | JDP17-011E | Controller Assembly | | 1 |
| 12 | JDP17-012R | LED Lamp Assembly | DC 12V, 1W x 3 | 1 |
| 13 | JDP17-096B | Laser Assembly (serial # 16090001 and higher) | | 2 |
| 14 | JDP17-014E | Switch Assembly | | 1 |
| 15 | TS-1550041 | Flat Washer | M6 | 4 |
| 16 | TS-1550031 | Flat Washer | M5 | 2 |
| 17 | TS-1523011 | Socket Set Screw | M6 x 6 | 2 |
| 18 | TS-1503061 | Socket HD Cap Screw | M6 x 25 | 4 |
| 19 | F000065 | Truss Head Machine Screw | M5 x 8 | 2 |
| 20 | TS-1533042 | Pan Head Machine Screw | M5 x 12 | 1 |
| 22 | JDP17-058 | Strain Relief | Dia. 10mm | 1 |
| 23 | 131803108 | Pan Head Tapping Screw | M3 x 8 | 4 |
| 24 | 131803108 | Pan Head Tapping Screw | M3 x 8 | 4 |
| 25 | JDP20-111 | Pan Head Machine Screw | M5 x 6 | 2 |
| 26 | JDP17-208 | Handle Assembly (#153 and #154) | | 3 |
| 27 | TS-1533042 | Pan Head Machine Screw | M5 x 12 | 2 |
| 28 | TS-1533032 | Pan Head Machine Screw | M5 x 10 | 1 |
| 29 | JDP17-029E | Strain Relief | Dia. 15.5mm | 1 |
| 30 | JDP17-030E | Strain Relief | Dia. 27mm | 1 |
| 31 | JDP17-030E | Strain Relief | Dia. 27mm | 1 |
| 32 | JDP17-032E | Cable Clamp | 12.5mm | 1 |
| 33 | JDP17-033R | Closed End Connector | 16~14AWG UL CE2 | 2 |
| 34 | JDP17-034R | Terminal | 12~10AWG UL CE5 | 2 |
| 36 | JDP17-036R | Extension Cord for Motor with Transformer | | 1 |
| 37 | JDP17-037R | Extension Cord for Laser Guide | | 1 |
| 38 | JDP17-038E | Power Cord | VDE 3G x 1.0mm ² | 1 |
| 39 | JDP17-032E | Cable Clamp | 12.5mm | 1 |
| 40 | JDP17-040E | Warning Label | | 1 |
| 41 | JDP17-041R | Heat Shrinking Sleeve | | 1 |
| 43 | JDP17-043R | Parallel Key | 6 x 6 x 30 | 1 |
| 44 | JDP17-044E | Motor Assembly | 230V, 1Ph | 1 |
| | JDP17-044EMF | Motor Fan (not shown) | | 1 |
| | JDP17-044ESC | Starting Capacitor (not shown) | 50μF, 250V | 1 |
| | JDP17-044ERC | Running Capacitor (not shown) | 16μF, 450V | 1 |
| | JDP17-044EJB | Junction Box (not shown) | | 1 |
| | JDP17-044EBC | Junction Box Cover (not shown) | | 1 |
| 47 | JDP17-036 | Poly V-Belt | 4PJ690 | 1 |
| 48 | JDP17-036 | Poly V-Belt | 4PJ690 | 1 |
| 49 | JDP17-212 | Table Wrench Assembly (#50 thru #52) | | 1 |
| 50 | JDP17-126 | Wrench | | 1 |
| 51 | JDP17-062 | Magnet | | 1 |
| 52 | TS-2171012 | Pan HD Slotted Screw | M4 x 6 | 1 |
| 53 | TS-152704 | Hex Wrench | 3mm | 1 |
| 54 | TS-152705 | Hex Wrench | 4mm | 1 |
| 55 | TS-152706 | Hex Wrench | 5mm | 1 |

Parts List

| Index No | Part No | Description | Size | Qty |
|----------|------------|--|---------------|-----|
| 56 | TS-152707 | Hex Wrench | 6mm | 1 |
| 57 | JDP17-042 | Tension Roller Base | | 1 |
| 58 | JDP17-037 | Handle | | 1 |
| 59 | JDP17-041 | Sleeve | | 1 |
| 60 | JDP17-205 | Tension Roller Assembly (#61 thru #63 and #67) | | 1 |
| 61 | JDP17-040 | Shaft | | 1 |
| 62 | JDP17-039 | Belt Tensioner | | 1 |
| 63 | BB-6202ZZ | Ball Bearing | 6202ZZ | 2 |
| 64 | JDP17-034 | Compression Spring | | 1 |
| 65 | TS-1550061 | Flat Washer | M8 | 5 |
| 66 | TS-1550031 | Flat Washer | M5 | 2 |
| 67 | JDP17-067R | C-Ring | A-15 | 1 |
| 68 | TS-1533042 | Pan Head Machine Screw | M5 x 12 | 2 |
| 69 | JDP17-069R | Square Head Bolt | M8 x 75 | 1 |
| 70 | JDP17-070R | Plastic Sleeve | | 1 |
| 71 | JDP17-077 | Retaining Ring | R52 | 2 |
| 72 | JDP17-072R | Pulley Set Nut | | 1 |
| 73 | JDP17-073R | Drive Sleeve Assembly (#74 thru #76) | | 1 |
| 74 | JDP17-074R | Spacer | | 1 |
| 75 | JDP17-075R | Drive Sleeve | | 1 |
| 76 | BB-6205ZZ | Ball Bearing | 6205ZZ | 2 |
| 77 | JDP17-076 | Spindle Pulley | | 1 |
| 78 | JDP17-109 | Drift Key | | 3 |
| 79 | JDP17-105 | Rubber Washer | | 1 |
| 80 | JDP17-080R | Quill Assembly (#81 thru #87) | | 1 |
| 81 | JDP17-081R | Spindle | | 1 |
| 82 | JDP17-082R | Quill | | 1 |
| 83 | JDP17-083R | Washer | | 1 |
| 84 | JDP17-084R | Locking Nut | | 1 |
| 85 | JDP17-085R | Spindle Nut | | 1 |
| 86 | BB-6203ZZ | Ball Bearing | 6203ZZ | 1 |
| 87 | BB-6205ZZ | Ball Bearing | 6205ZZ | 1 |
| 88 | JDP17-088R | Motor Pulley | | 1 |
| 89 | TS-1524011 | Socket Set Screw | M8 x 8 | 1 |
| 90 | JDP17-206 | Center Pulley Assembly (#91 thru #94) | | 1 |
| 91 | JDP17-047 | Center Pulley Shaft | | 1 |
| 92 | JDP17-048 | Center Pulley | | 1 |
| 93 | BB-6202ZZ | Ball Bearing | 6202ZZ | 2 |
| 94 | JDP17-067R | C-Ring | A-15 | 1 |
| 95 | JDP17-008 | Rack | | 1 |
| 96 | JDP17-130 | Table Wood Insert | | 1 |
| 98 | JDP17-098R | Base | | 1 |
| 100 | JDP17-100R | Column Assembly (#101 thru #103) | | 1 |
| 101 | JDP17-005 | Column | | 1 |
| 102 | JDP17-102R | Column Support | | 1 |
| 103 | TS-1525031 | Socket Set Screw | M10 x 16 | 1 |
| 104 | JDP17-203R | Table Assembly (#105 thru #117) | | 1 |
| 105 | JDP17-018 | Helical Gear | | 1 |
| 106 | JDP17-014 | Gear Pin | | 1 |
| 107 | JDP17-024 | Worm Shaft | | 1 |
| 108 | JDP17-108R | Table Support | | 1 |
| 109 | JDP17-109R | Table | | 1 |
| 110 | JDP17-016 | Taper Pin | | 1 |
| 111 | JDP17-021 | Scale Indicator | | 1 |
| 112 | JDP17-020 | Tilt Scale | | 1 |
| 113 | TS-155010 | Flat Washer | M16 | 1 |
| 114 | TS-0071031 | Hex Cap Screw | 5/8-11 x 2 | 1 |
| 115 | JDP17-025 | Pan Head Rivet | Dia.2.3 x 3.5 | 2 |

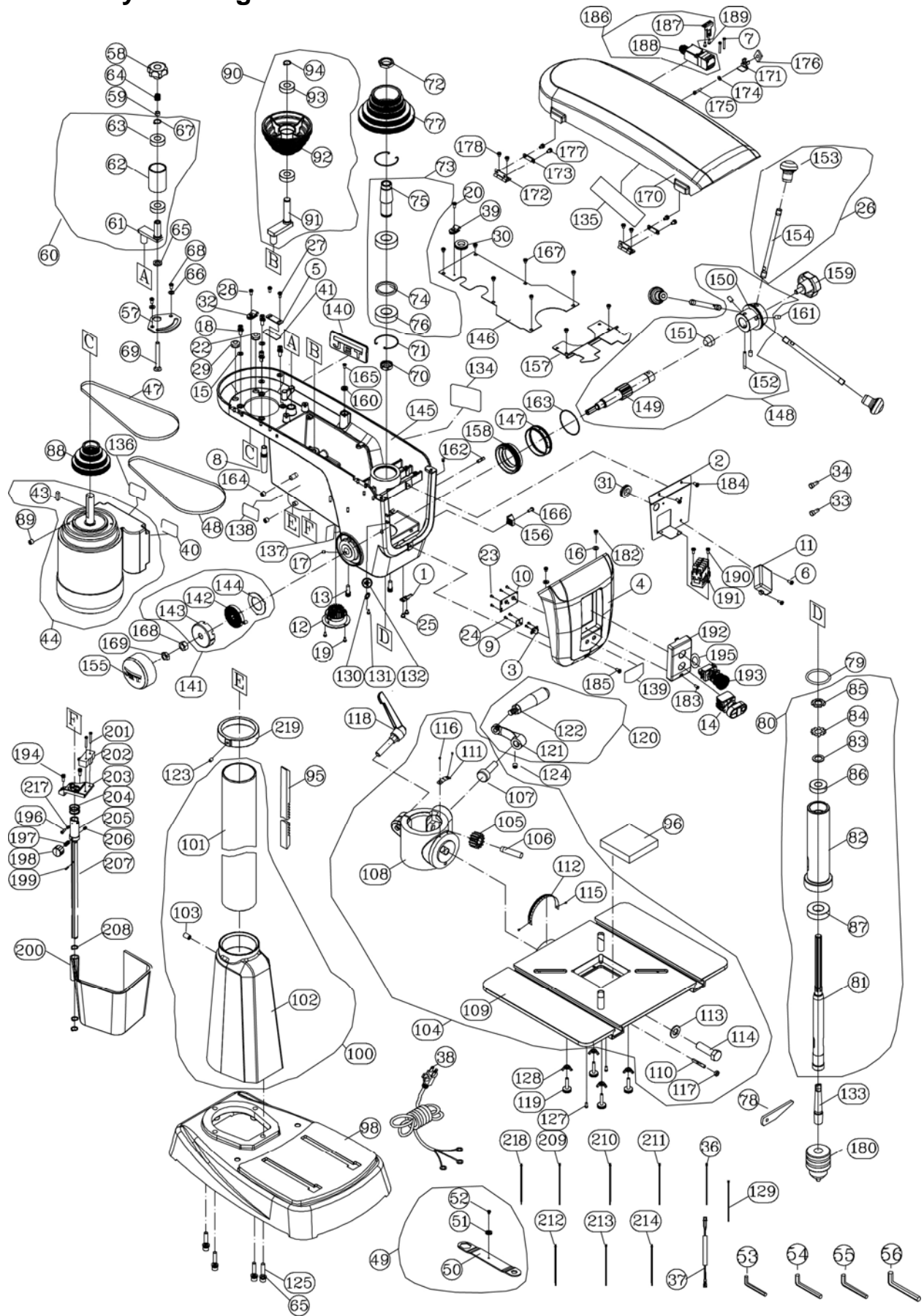
Parts List

| Index No | Part No | Description | Size | Qty |
|----------|-------------|---|---------------|-----|
| 116 | JDP17-025 | Pan Head Rivet | Dia.2.3 x 3.5 | 2 |
| 117 | TS-1540061 | Hex Nut | M8 | 1 |
| 118 | JDP17-011 | Lock Handle | | 1 |
| 119 | JDP17-118 | Special Bolt | | 4 |
| 120 | JDP17-202 | Crank Arm Handle Assembly (#121 and #122) | | 1 |
| 121 | JDP17-012 | Crank Arm Shaft | | 1 |
| 122 | JDP17-013 | Crank Arm Handle Grip | | 1 |
| 123 | TS-1523031 | Socket Set Screw | M6 x 10 | 1 |
| 124 | TS-1524011 | Socket Set Screw | M8 x 8 | 1 |
| 125 | TS-1504101 | Socket HD Cap Screw | M8 x 50 | 4 |
| 127 | JDP17-090 | Pan HD Tapping Screw | M4 x 20 | 2 |
| 128 | JDP17-117 | Wing Nut | M6 | 4 |
| 129 | JDP17-129R | Cable Tie | A-120S | 1 |
| 130 | F002097 | External Tooth Lock Washer | M5 | 2 |
| 131 | 5712561 | Pan Head Machine Screw | M5 x 8 | 2 |
| 132 | JDP17-132R | Grounding Label | | 1 |
| 133 | JDP17-133E | Arbor | MT2/B16 | 1 |
| 134 | JDP17-134E | Warning Label | | 1 |
| 135 | JDP17-135E | Speed Chart | | 1 |
| 136 | JDP17-136E | Motor Label | 230V, 1Ph | 1 |
| 137 | JDP17-137E | Laser Caution Label | | 1 |
| 138 | JDP17-138E | I.D. Label | | 1 |
| 139 | JDP17-121 | Control Label | | 1 |
| 140 | JET-92 | JET Logo | 92 x 38 mm | 1 |
| 141 | JDP17-141RB | Coil Spring Assembly (#142 thru #144) | | 1 |
| 142 | JDP17-142RB | Coil Spring (serial # 17080146 and higher) | | 1 |
| 143 | JDP17-143RB | Spring Housing (serial # 17080146 and higher) | | 1 |
| 144 | JDP17-144R | Spring Retainer | | 1 |
| 145 | JDP17-145EB | Headstock (serial # 16090001 and higher) | | 1 |
| 146 | JDP17-146R | Plate Cover | | 1 |
| 147 | JDP17-147E | Scale Ring | Metric | 1 |
| 148 | JDP17-148R | Pinion Shaft Assembly (#149 thru #152) | | 1 |
| 149 | JDP17-149R | Pinion Shaft | | 1 |
| 150 | JDP17-150R | Hub | | 1 |
| 151 | JDP17-151R | Taper Axis | | 1 |
| 152 | JDP17-065 | Pin | 6-45 | 1 |
| 153 | JDP17-070 | Grip | | 3 |
| 154 | JDP17-069 | Handle | | 3 |
| 155 | JDP17-155R | Spring Housing Cap | | 1 |
| 156 | JDP17-045 | Depth Stop Indicator | | 1 |
| 157 | JDP17-157R | Front Cover | | 1 |
| 158 | JDP17-158R | Ring | | 1 |
| 159 | JDP17-072 | Lock Handle | | 1 |
| 160 | JDP17-062 | Magnet | | 1 |
| 161 | JDP17-161R | Pin | | 3 |
| 162 | JDP17-094 | Stop Screw | | 1 |
| 163 | JDP17-163R | O-Ring | 60 x 1.5 NBR | 1 |
| 164 | F010431 | Socket Set Screw | M10 x 8 | 2 |
| 165 | 6286927 | CR RE Count HD Screw | M4 x 10 | 1 |
| 166 | TS-1533042 | Pan Head Machine Screw | M5 x 12 | 1 |
| 167 | TS-1533032 | Pan Head Machine Screw | M5 x 10 | 8 |
| 168 | JDP17-168R | Hex Nut | 1/2-20 x T10 | 1 |
| 169 | JDP17-169R | Hex Nut | 1/2-20 x T6.5 | 1 |
| 170 | JDP17-170R | Pulley Cover | | 1 |
| 171 | JDP17-051 | Plate | | 1 |
| 172 | JDP17-055 | Hinge | | 2 |
| 173 | JDP17-056 | Pressing Plate | | 2 |
| 174 | TS-1550021 | Flat Washer | M4 | 1 |

Parts List

| Index No | Part No | Description | Size | Qty |
|----------|------------|--|--------------|-----|
| 175 | TS-1501061 | Socket HD Cap Screw | M4 x 20 | 1 |
| 176 | JDP17-176R | Follower Plate | | 1 |
| 177 | TS-1533032 | Pan Head Machine Screw | M5 x 10 | 4 |
| 178 | JDP20-111 | Pan Head Machine Screw | M5 x 6 | 4 |
| 180 | JDP17-180E | Keyless Chuck | B16-16L | 1 |
| 182 | TS-1533032 | Pan Head Machine Screw | M5 x 10 | 2 |
| 183 | JDP17-090 | Pan HD Tapping Screw | M4 x 16 | 1 |
| 184 | JDP20-111 | Pan Head Machine Screw | M5 x 6 | 2 |
| 185 | TS-1533032 | Pan Head Machine Screw | M5 x 10 | 1 |
| 186 | JDP17-186E | Limit Switch Assembly (#187 thru #188) | QKS8-F1-K1 | 1 |
| 187 | JDP17-187E | Switch Key | | 1 |
| 188 | JDP17-188E | Switch Assembly | | 1 |
| 189 | JDP17-189E | Pan HD Tapping Screw | M4 x 16 | 2 |
| 190 | JDP17-190E | Pan HD Tapping Screw | M4 x 12 | 2 |
| 191 | JDP17-191E | Magnetic Switch Assembly | JD3-2-F2-V3 | 1 |
| 192 | JDP17-192E | Switch Mounting | | 1 |
| 193 | JDP17-193E | Emergency Switch Assembly | HY57B-4-F4 | 1 |
| 194 | TS-1533052 | Pan Head Machine Screw | M5 x 16 | 2 |
| 195 | JDP17-195E | Caution Label | | 1 |
| 196 | TS-1532042 | Pan HD Screw | M4 x 12 | 1 |
| 197 | JDP17-197E | Compression Spring | | 1 |
| 198 | JDP17-198E | Knob | | 1 |
| 199 | JDP17-199E | Spring Pin | Dia. 3 x 10 | 1 |
| 200 | JDP17-200E | Chuck Guard | | 1 |
| 201 | TS-2284302 | Pan Head Machine Screw | M4 x 30 | 1 |
| 202 | JDP17-202E | Micro Switch Assembly | | 1 |
| 203 | JDP17-203E | Plunger Housing | | 1 |
| 204 | JDP17-204E | Compression Spring | | 1 |
| 205 | JDP17-205E | Pivot Support | | 1 |
| 206 | TS-2276081 | Socket Set Screw | M6 x 8 | 1 |
| 207 | JDP17-207E | Pivot Shaft | | 1 |
| 208 | JDP17-067R | C-Ring | A-15 | 3 |
| 209 | JDP17-209E | Lead Wire Assembly | L100 (Black) | 2 |
| 210 | JDP17-210E | Lead Wire Assembly | L150 (Black) | 2 |
| 211 | JDP17-211E | Lead Wire Assembly | L350 (Black) | 1 |
| 212 | JDP17-212E | Lead Wire Assembly | L350 (Black) | 1 |
| 213 | JDP17-213E | Lead Wire Assembly | L150 (Brown) | 1 |
| 214 | JDP17-214E | Lead Wire Assembly | L150 (Blue) | 1 |
| 217 | JDP17-217E | Collar | | 1 |
| 218 | JDP17-218E | Lead Wire Assembly | L100 (Black) | 1 |
| 219 | JDP17-219E | Rack Collar | | 1 |

Assembly Drawing for 716300M



Parts and Assembly for 716300T

Parts List

| Index No | Part No | Description | Size | Qty |
|----------|--------------|---|-----------------|-----|
| 1 | JDP17-001R | Anchor Plate | | 1 |
| 2 | JDP17-002E | Plate | | 1 |
| 3 | JDP17-102 | Indicator Light | | 1 |
| 4 | JDP17-004R | Front Housing | | 1 |
| 5 | JDP17-108 | Plate | | 1 |
| 6 | 131803108 | Pan Head Tapping Screw | M3 x 8 | 2 |
| 7 | TS-2284302 | Pan Head Machine Screw | M4 x 30 | 2 |
| 8 | JDP17-008E | Cable Protective Sleeve | | 1 |
| 9 | JDP17-101E | LED Circuit Board | | 1 |
| 10 | JDP17-107 | MCU Circuit Board | | 1 |
| 11 | JDP17-011E | Controller Assembly | | 1 |
| 12 | JDP17-012R | LED Lamp Assembly | DC 12V, 1W x 3 | 1 |
| 13 | JDP17-096B | Laser Assembly (serial # 16060001 and higher) | | 2 |
| 14 | JDP17-014E | Switch Assembly | | 1 |
| 15 | TS-1550041 | Flat Washer | M6 | 4 |
| 16 | TS-1550031 | Flat Washer | M5 | 2 |
| 17 | TS-1523011 | Socket Set Screw | M6 x 6 | 2 |
| 18 | TS-1503061 | Socket HD Cap Screw | M6 x 25 | 4 |
| 19 | F000065 | Truss Head Machine Screw | M5 x 8 | 2 |
| 20 | TS-1533042 | Pan Head Machine Screw | M5 x 12 | 1 |
| 22 | JDP17-058 | Strain Relief | Dia. 10mm | 1 |
| 23 | 131803108 | Pan Head Tapping Screw | M3 x 8 | 4 |
| 24 | 131803108 | Pan Head Tapping Screw | M3 x 8 | 4 |
| 25 | JDP20-111 | Pan Head Machine Screw | M5 x 6 | 2 |
| 26 | JDP17-208 | Handle Assembly (#153 and #154) | | 3 |
| 27 | TS-1533042 | Pan Head Machine Screw | M5 x 12 | 2 |
| 28 | TS-1533032 | Pan Head Machine Screw | M5 x 10 | 1 |
| 29 | JDP17-029E | Strain Relief | Dia. 15.5mm | 1 |
| 30 | JDP17-030E | Strain Relief | Dia. 27mm | 1 |
| 31 | JDP17-030E | Strain Relief | Dia. 27mm | 1 |
| 32 | JDP17-032E | Cable Clamp | 12.5mm | 1 |
| 33 | JDP17-033R | Closed End Connector | 16~14AWG UL CE2 | 2 |
| 34 | JDP17-034R | Terminal | 12~10AWG UL CE5 | 2 |
| 36 | JDP17-036R | Extension Cord for Motor with Transformer | | 1 |
| 37 | JDP17-037R | Extension Cord for Laser Guide | | 1 |
| 38 | JDP17-038AE | Plug | KEDU P551 | 1 |
| 39 | JDP17-032E | Cable Clamp | 12.5mm | 1 |
| 40 | JDP17-040E | Warning Label | | 1 |
| 41 | JDP17-041R | Heat Shrinking Sleeve | | 1 |
| 43 | JDP17-043R | Parallel Key | 6 x 6 x 30 | 1 |
| 44 | JDP17-044AE | Motor Assembly | 400V, 3Ph | 1 |
| | JDP17-044EMF | Motor Fan (not shown) | | 1 |
| | JDP17-044EJB | Junction Box (not shown) | | 1 |
| | JDP17-044EBC | Junction Box Cover (not shown) | | 1 |
| 47 | JDP17-036 | Poly V-Belt | 4PJ690 | 1 |
| 48 | JDP17-036 | Poly V-Belt | 4PJ690 | 1 |
| 49 | JDP17-212 | Table Wrench Assembly (#50 thru #52) | | 1 |
| 50 | JDP17-126 | Wrench | | 1 |
| 51 | JDP17-062 | Magnet | | 1 |
| 52 | TS-2171012 | Pan HD Slotted Screw | M4 x 6 | 1 |
| 53 | TS-152704 | Hex Wrench | 3mm | 1 |
| 54 | TS-152705 | Hex Wrench | 4mm | 1 |
| 55 | TS-152706 | Hex Wrench | 5mm | 1 |
| 56 | TS-152707 | Hex Wrench | 6mm | 1 |
| 57 | JDP17-042 | Tension Roller Base | | 1 |

Parts List

| Index No | Part No | Description | Size | Qty |
|----------|------------|--|---------------|-----|
| 58 | JDP17-037 | Handle | | 1 |
| 59 | JDP17-041 | Sleeve | | 1 |
| 60 | JDP17-205 | Tension Roller Assembly (#61 thru #63 and #67) | | 1 |
| 61 | JDP17-040 | Shaft | | 1 |
| 62 | JDP17-039 | Belt Tensioner | | 1 |
| 63 | BB-6202ZZ | Ball Bearing | 6202ZZ | 2 |
| 64 | JDP17-034 | Compression Spring | | 1 |
| 65 | TS-1550061 | Flat Washer | M8 | 5 |
| 66 | TS-1550031 | Flat Washer | M5 | 2 |
| 67 | JDP17-067R | C-Ring | A-15 | 1 |
| 68 | TS-1533042 | Pan Head Machine Screw | M5 x 12 | 2 |
| 69 | JDP17-069R | Square Head Bolt | M8 x 75 | 1 |
| 70 | JDP17-070R | Plastic Sleeve | | 1 |
| 71 | JDP17-077 | Retaining Ring | R52 | 2 |
| 72 | JDP17-072R | Pulley Set Nut | | 1 |
| 73 | JDP17-073R | Drive Sleeve Assembly (#74 thru #76) | | 1 |
| 74 | JDP17-074R | Spacer | | 1 |
| 75 | JDP17-075R | Drive Sleeve | | 1 |
| 76 | BB-6205ZZ | Ball Bearing | 6205ZZ | 2 |
| 77 | JDP17-076 | Spindle Pulley | | 1 |
| 78 | JDP17-109 | Drift Key | | 3 |
| 79 | JDP17-105 | Rubber Washer | | 1 |
| 80 | JDP17-080R | Quill Assembly (#81 thru #87) | | 1 |
| 81 | JDP17-081R | Spindle | | 1 |
| 82 | JDP17-082R | Quill | | 1 |
| 83 | JDP17-083R | Washer | | 1 |
| 84 | JDP17-084R | Locking Nut | | 1 |
| 85 | JDP17-085R | Spindle Nut | | 1 |
| 86 | BB-6203ZZ | Ball Bearing | 6203ZZ | 1 |
| 87 | BB-6205ZZ | Ball Bearing | 6205ZZ | 1 |
| 88 | JDP17-088R | Motor Pulley | | 1 |
| 89 | TS-1524011 | Socket Set Screw | M8 x 8 | 1 |
| 90 | JDP17-206 | Center Pulley Assembly (#91 thru #94) | | 1 |
| 91 | JDP17-047 | Center Pulley Shaft | | 1 |
| 92 | JDP17-048 | Center Pulley | | 1 |
| 93 | BB-6202ZZ | Ball Bearing | 6202ZZ | 2 |
| 94 | JDP17-067R | C-Ring | A-15 | 1 |
| 95 | JDP17-008 | Rack | | 1 |
| 96 | JDP17-130 | Table Wood Insert | | 1 |
| 98 | JDP17-098R | Base | | 1 |
| 100 | JDP17-100R | Column Assembly (#101 thru #103) | | 1 |
| 101 | JDP17-005 | Column | | 1 |
| 102 | JDP17-102R | Column Support | | 1 |
| 103 | TS-1525031 | Socket Set Screw | M10 x 16 | 1 |
| 104 | JDP17-203R | Table Assembly (#105 thru #117) | | 1 |
| 105 | JDP17-018 | Helical Gear | | 1 |
| 106 | JDP17-014 | Gear Pin | | 1 |
| 107 | JDP17-024 | Worm Shaft | | 1 |
| 108 | JDP17-108R | Table Support | | 1 |
| 109 | JDP17-109R | Table | | 1 |
| 110 | JDP17-016 | Taper Pin | | 1 |
| 111 | JDP17-021 | Scale Indicator | | 1 |
| 112 | JDP17-020 | Tilt Scale | | 1 |
| 113 | TS-155010 | Flat Washer | M16 | 1 |
| 114 | TS-0071031 | Hex Cap Screw | 5/8-11 x 2 | 1 |
| 115 | JDP17-025 | Pan Head Rivet | Dia.2.3 x 3.5 | 2 |
| 116 | JDP17-025 | Pan Head Rivet | Dia.2.3 x 3.5 | 2 |
| 117 | TS-1540061 | Hex Nut | M8 | 1 |

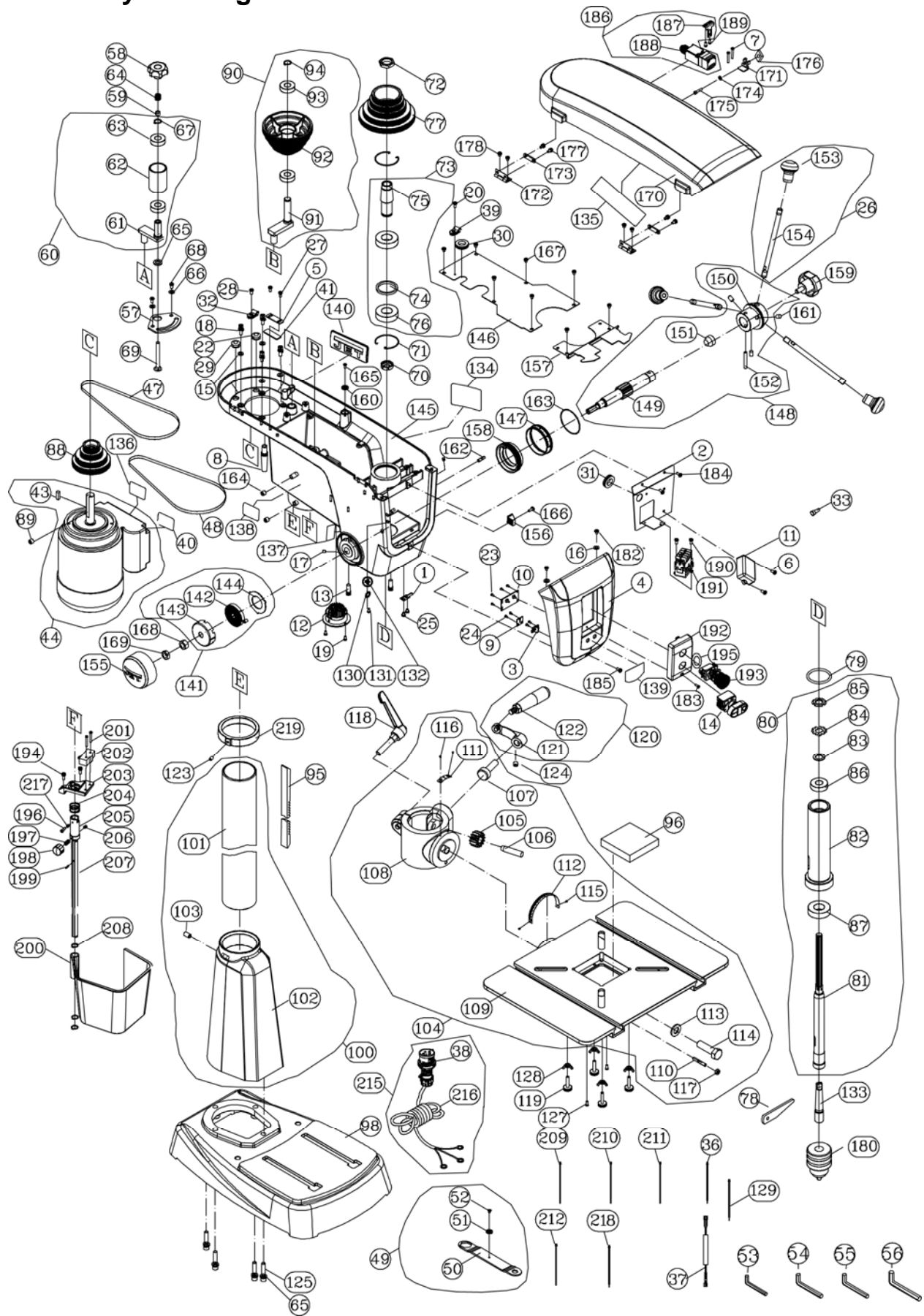
Parts List

| Index No | Part No | Description | Size | Qty |
|----------|-------------|---|---------------|-----|
| 118 | JDP17-011 | Lock Handle | | 1 |
| 119 | JDP17-118 | Special Bolt | | 4 |
| 120 | JDP17-202 | Crank Arm Handle Assembly (#121 and #122) | | 1 |
| 121 | JDP17-012 | Crank Arm Shaft | | 1 |
| 122 | JDP17-013 | Crank Arm Handle Grip | | 1 |
| 123 | TS-1523031 | Socket Set Screw | M6 x 10 | 1 |
| 124 | TS-1524011 | Socket Set Screw | M8 x 8 | 1 |
| 125 | TS-1504101 | Socket HD Cap Screw | M8 x 50 | 4 |
| 127 | JDP17-090 | Pan HD Tapping Screw | M4 x 20 | 2 |
| 128 | JDP17-117 | Wing Nut | M6 | 4 |
| 129 | JDP17-129R | Cable Tie | A-120S | 1 |
| 130 | F002097 | External Tooth Lock Washer | M5 | 2 |
| 131 | 5712561 | Pan Head Machine Screw | M5 x 8 | 2 |
| 132 | JDP17-132R | Grounding Label | | 1 |
| 133 | JDP17-133E | Arbor | MT2/B16 | 1 |
| 134 | JDP17-134E | Warning Label | | 1 |
| 135 | JDP17-135E | Speed Chart | | 1 |
| 136 | JDP17-136AE | Motor Label | 400V, 3Ph | 1 |
| 137 | JDP17-137E | Laser Caution Label | | 1 |
| 138 | JDP17-138AE | I.D. Label | | 1 |
| 139 | JDP17-121 | Control Label | | 1 |
| 140 | JET-92 | JET Logo | 92 x 38 mm | 1 |
| 141 | JDP17-141RB | Coil Spring Assembly (#142 thru #144) | | 1 |
| 142 | JDP17-142RB | Coil Spring (serial # 17080146 and higher) | | 1 |
| 143 | JDP17-143RB | Spring Housing (serial # 17080146 and higher) | | 1 |
| 144 | JDP17-144R | Spring Retainer | | 1 |
| 145 | JDP17-145EB | Headstock (serial # 16060001 and higher) | | 1 |
| 146 | JDP17-146R | Plate Cover | | 1 |
| 147 | JDP17-147E | Scale Ring | Metric | 1 |
| 148 | JDP17-148R | Pinion Shaft Assembly (#149 thru #152) | | 1 |
| 149 | JDP17-149R | Pinion Shaft | | 1 |
| 150 | JDP17-150R | Hub | | 1 |
| 151 | JDP17-151R | Taper Axis | | 1 |
| 152 | JDP17-065 | Pin | 6-45 | 1 |
| 153 | JDP17-070 | Grip | | 3 |
| 154 | JDP17-069 | Handle | | 3 |
| 155 | JDP17-155R | Spring Housing Cap | | 1 |
| 156 | JDP17-045 | Depth Stop Indicator | | 1 |
| 157 | JDP17-157R | Front Cover | | 1 |
| 158 | JDP17-158R | Ring | | 1 |
| 159 | JDP17-072 | Lock Handle | | 1 |
| 160 | JDP17-062 | Magnet | | 1 |
| 161 | JDP17-161R | Pin | | 3 |
| 162 | JDP17-094 | Stop Screw | | 1 |
| 163 | JDP17-163R | O-Ring | 60 x 1.5 NBR | 1 |
| 164 | F010431 | Socket Set Screw | M10 x 8 | 2 |
| 165 | 6286927 | CR RE Count HD Screw | M4 x 10 | 1 |
| 166 | TS-1533042 | Pan Head Machine Screw | M5 x 12 | 1 |
| 167 | TS-1533032 | Pan Head Machine Screw | M5 x 10 | 8 |
| 168 | JDP17-168R | Hex Nut | 1/2-20 x T10 | 1 |
| 169 | JDP17-169R | Hex Nut | 1/2-20 x T6.5 | 1 |
| 170 | JDP17-170R | Pulley Cover | | 1 |
| 171 | JDP17-051 | Plate | | 1 |
| 172 | JDP17-055 | Hinge | | 2 |
| 173 | JDP17-056 | Pressing Plate | | 2 |
| 174 | TS-1550021 | Flat Washer | M4 | 1 |
| 175 | TS-1501061 | Socket HD Cap Screw | M4 x 20 | 1 |
| 176 | JDP17-176R | Follower Plate | | 1 |

Parts List

| Index No | Part No | Description | Size | Qty |
|----------|-------------|--|-----------------------------|-----|
| 177 | TS-1533032 | Pan Head Machine Screw | M5 x 10 | 4 |
| 178 | JDP20-111 | Pan Head Machine Screw | M5 x 6 | 4 |
| 180 | JDP17-180E | Keyless Chuck | B16-16L | 1 |
| 182 | TS-1533032 | Pan Head Machine Screw | M5 x 10 | 2 |
| 183 | JDP17-090 | Pan HD Tapping Screw | M4 x 16 | 1 |
| 184 | JDP20-111 | Pan Head Machine Screw | M5 x 6 | 2 |
| 185 | TS-1533032 | Pan Head Machine Screw | M5 x 10 | 1 |
| 186 | JDP17-186E | Limit Switch Assembly (#187 thru #188) | QKS8-F1-K1 | 1 |
| 187 | JDP17-187E | Switch Key | | 1 |
| 188 | JDP17-188E | Switch Assembly | | 1 |
| 189 | JDP17-189E | Pan HD Tapping Screw | M4 x 16 | 2 |
| 190 | JDP17-190E | Pan HD Tapping Screw | M4 x 12 | 2 |
| 191 | JDP17-191E | Magnetic Switch Assembly | JD3-2-F2-V3 | 1 |
| 192 | JDP17-192E | Switch Mounting | | 1 |
| 193 | JDP17-193E | Emergency Switch Assembly | HY57B-4-F4 | 1 |
| 194 | TS-1533052 | Pan Head Machine Screw | M5 x 16 | 2 |
| 195 | JDP17-195E | Caution Label | | 1 |
| 196 | TS-1532042 | Pan HD Screw | M4 x 12 | 1 |
| 197 | JDP17-197E | Compression Spring | | 1 |
| 198 | JDP17-198E | Knob | | 1 |
| 199 | JDP17-199E | Spring Pin | Dia. 3 x 10 | 1 |
| 200 | JDP17-200E | Chuck Guard | | 1 |
| 201 | TS-2284302 | Pan Head Machine Screw | M4 x 30 | 1 |
| 202 | JDP17-202E | Micro Switch Assembly | | 1 |
| 203 | JDP17-203E | Plunger Housing | | 1 |
| 204 | JDP17-204E | Compression Spring | | 1 |
| 205 | JDP17-205E | Pivot Support | | 1 |
| 206 | TS-2276081 | Socket Set Screw | M6 x 8 | 1 |
| 207 | JDP17-207E | Pivot Shaft | | 1 |
| 208 | JDP17-067R | C-Ring | A-15 | 3 |
| 209 | JDP17-209E | Lead Wire Assembly | L100 (Black) | 2 |
| 210 | JDP17-210E | Lead Wire Assembly | L150 (Black) | 2 |
| 211 | JDP17-211E | Lead Wire Assembly | L350 (Black) | 1 |
| 212 | JDP17-212E | Lead Wire Assembly | L350 (Black) | 1 |
| 213 | JDP17-213E | Lead Wire Assembly | L150 (Brown) | 1 |
| 214 | JDP17-214E | Lead Wire Assembly | L150 (Blue) | 1 |
| 215 | JDP17-215AE | Power Cord Assembly (#38 and #216) | | 1 |
| 216 | JDP17-216AE | Power Cord | VDE 5G x 1.0mm ² | 1 |
| 217 | JDP17-217E | Collar | | 1 |
| 218 | JDP17-218E | Lead Wire Assembly | L100 (Black) | 1 |
| 219 | JDP17-219E | Rack Collar | | 1 |

Assembly Drawing for 716300T

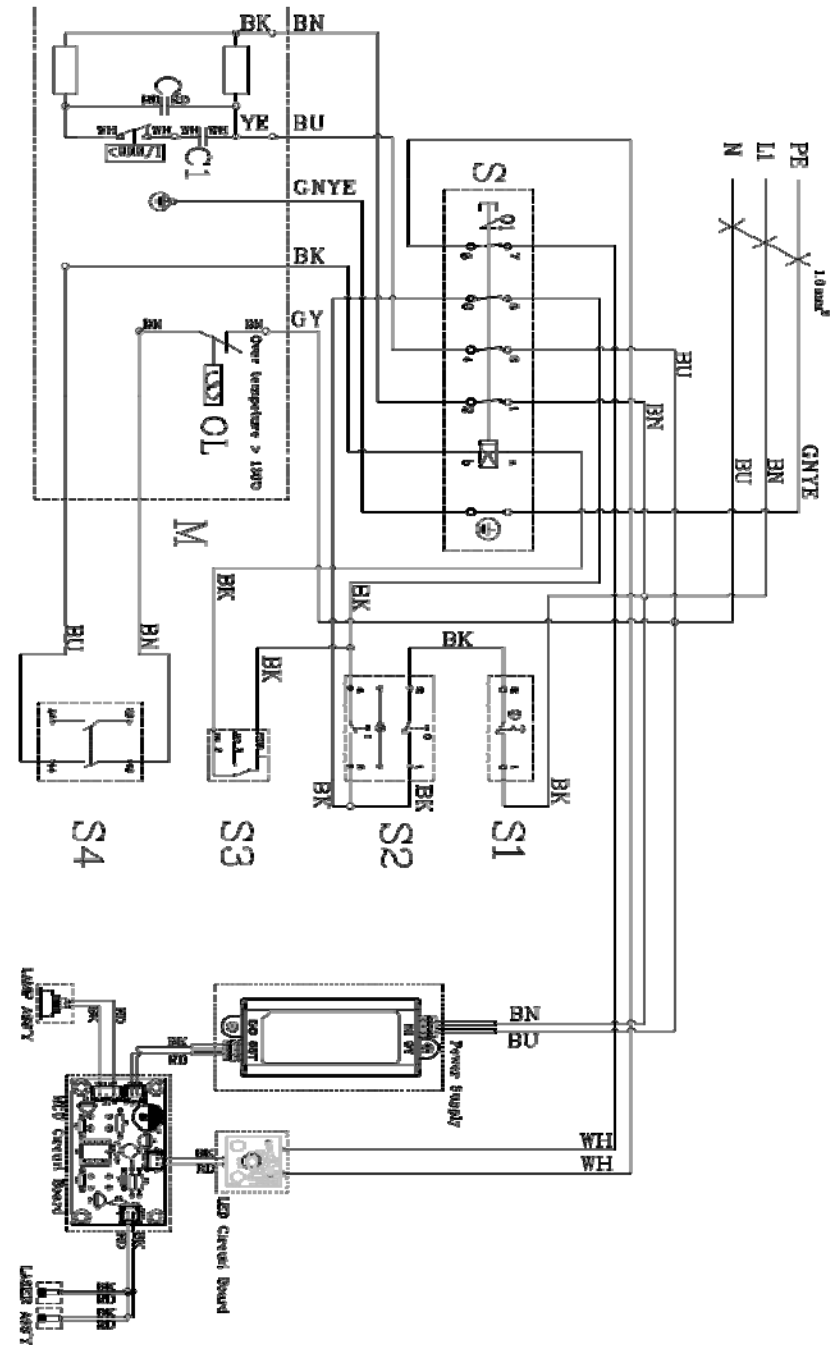


JDP-17

716300M.....~230V, 1L/N/PE, 50Hz

| | colour of strands | Litzenfarben | couleur des cordons |
|------|-------------------|--------------|---------------------|
| BK | black | schwarz | noir |
| WH | white | weiß | blanc |
| BU | blue | blau | bleu |
| YE | yellow | gelb | jaune |
| RD | red | rot | rouge |
| BN | brown | braun | brun |
| GY | grey | grau | gris |
| GNYE | green-yellow | grün-gelb | vert-jaune |
| OG | orange | orange | orange |
| VT | violet | violett | violet |

| | meaning of symbol | Bedeutung der Zeichen | interprétation |
|----|--------------------|------------------------|------------------------|
| M | motor | Motor | moteur |
| S | switch | Schalter | interrupteur |
| C | condenser | Kondensator | condensateur |
| E | electronic unit | Elektronik Einheit | unité électronique |
| F | fuse | Sicherung | fusible |
| RS | reversing switch | Drehrichtungsschalter | commu. droite/gauche |
| CS | centrifugal switch | Fliehkraftschalter | déclencheur centrifuge |
| OL | overload cut-off | Überlastschuttschalter | déclencheur surcharge |
| LS | limit switch | Positionsendschalter | micro |



JDP-17

716300T.....~400V, 3L/N/PE, 50Hz

| | colour of strands | Litzenfarben | couleur des cordons |
|------|-------------------|--------------|---------------------|
| BK | black | schwarz | noir |
| WH | white | weiß | blanc |
| BU | blue | blau | bleu |
| YE | yellow | gelb | jaune |
| RD | red | rot | rouge |
| BN | brown | braun | brun |
| GY | grey | grau | gris |
| GNYE | green-yellow | grün-gelb | vert-jaune |
| OG | orange | orange | orange |
| VT | violet | violett | violet |

| | meaning of symbol | Bedeutung der Zeichen | interprétation |
|----|--------------------|------------------------|------------------------|
| M | motor | Motor | moteur |
| S | switch | Schalter | interrupteur |
| C | condenser | Kondensator | condensateur |
| E | electronic unit | Elektronik Einheit | unité électronique |
| F | fuse | Sicherung | fusible |
| RS | reversing switch | Drehrichtungsschalter | commu. droite/gauche |
| CS | centrifugal switch | Fliehkraftschalter | déclencheur centrifuge |
| OL | overload cut-off | Überlastschuttschalter | déclencheur surcharge |
| LS | limit switch | Positionsendschalter | micro |

